

# ViewSonic®

## DPG801BK Digital Photo Frame

- Quick Start Guide



Model No. : VS12242

# Compliance Information

## FCC Statement

This device complies with part 15 of FCC Rules. Operation is subject to the following two conditions: (1) this device may not cause harmful interference, and (2) this device must accept any interference received, including interference that may cause undesired operation.

This equipment has been tested and found to comply with the limits for a Class B digital device, pursuant to part 15 of the FCC Rules. These limits are designed to provide reasonable protection against harmful interference in a residential installation. This equipment generates, uses, and can radiate radio frequency energy, and if not installed and used in accordance with the instructions, may cause harmful interference to radio communications. However, there is no guarantee that interference will not occur in a particular installation. If this equipment does cause harmful interference to radio or television reception, which can be determined by turning the equipment off and on, the user is encouraged to try to correct the interference by one or more of the following measures:

- Reorient or relocate the receiving antenna.
- Increase the separation between the equipment and receiver.
- Connect the equipment into an outlet on a circuit different from that to which the receiver is connected.
- Consult the dealer or an experienced radio/TV technician for help.

**Warning:** You are cautioned that changes or modifications not expressly approved by the party responsible for compliance could void your authority to operate the equipment.

## For Canada

- This Class B digital apparatus complies with Canadian ICES-003.
- Cet appareil numérique de la classe B est conforme à la norme NMB-003 du Canada.

## CE Conformity for European Countries



The device complies with the requirements of the EEC directive 2004/108/EC as amended by 92/31/EEC and 93/68/EEC Art.5 with regard to “Electromagnetic compatibility”, and 2006/95/EC as amended by 93/68/EEC Art.13 with regard to “Safety”.

## Following information is only for EU-member states:

The mark shown to the right is in compliance with the Waste Electrical and Electronic Equipment Directive 2002/96/EC (WEEE).

The mark indicates the requirement NOT to dispose the equipment as unsorted municipal waste, but use the return and collection systems according to local law.



## Important Safety Instructions

1. Read these instructions.
2. Keep these instructions.
3. Heed all warnings.
4. Follow all instructions.
5. Do not use this unit near water.
6. Clean with a soft, dry cloth. If still not clean, see “Cleaning the Display” in this guide for further instructions.
7. Do not block any ventilation openings. Install the unit in accordance with the manufacturer's instructions.
8. Do not install near any heat sources such as radiators, heat registers, stoves, or other devices (including amplifiers) that produce heat.
9. Do not defeat the safety purpose of the polarized or grounding-type plug. A polarized plug has two blades with one wider than the other. A grounding type plug has two blades and a third grounding

prong. The wide blade and the third prong are provided for your safety. If the provided plug does not fit into your outlet, consult an electrician for replacement of the obsolete outlet.

10. Protect the power cord from being walked on or pinched particularly at plugs. Convenience receptacles and the point where they exit from the unit. Be sure that the power outlet is located near the unit so that it is easily accessible.
11. Only use attachments/accessories specified by the manufacturer.
12. Use only with the cart, stand, tripod, bracket, or table specified by the manufacturer, or sold with the unit. When a cart is used, use caution when moving the cart/unit combination to avoid injury from tipping over.
13. Unplug this unit when unused for long periods of time.
14. Refer all servicing to qualified service personnel. Servicing is required when the unit has been damaged in any way, such as: if the power-supply cord or plug is damaged, if liquid is spilled onto or objects fall into the unit, if the unit is exposed to rain or moisture, or if the unit does not operate normally or has been dropped.



# Declaration of RoHS Compliance

This product has been designed and manufactured in compliance with Directive 2002/95/EC of the European Parliament and the Council on restriction of the use of certain hazardous substances in electrical and electronic equipment (RoHS Directive) and is deemed to comply with the maximum concentration values issued by the European Technical Adaptation Committee (TAC) as shown below:

Substance	Proposed Maximum Concentration	Actual Concentration
Lead (Pb)	0.1%	< 0.1%
Mercury (Hg)	0.1%	< 0.1%
Cadmium (Cd)	0.01%	< 0.01%
Hexavalent Chromium (Cr <sup>6+</sup> )	0.1%	< 0.1%
Polybrominated biphenyls (PBB)	0.1%	< 0.1%
Polybrominated diphenyl ethers (PBDE)	0.1%	< 0.1%

Certain components of products as stated above are exempted under the Annex of the RoHS Directives as noted below:

Examples of exempted components are:

1. Mercury in compact fluorescent lamps not exceeding 5 mg per lamp and in other lamps not specifically mentioned in the Annex of RoHS Directive.
2. Lead in glass of cathode ray tubes, electronic components, fluorescent tubes, and electronic ceramic parts (e.g. piezoelectronic devices).
3. Lead in high temperature type solders (i.e. lead-based alloys containing 85% by weight or more lead).
4. Lead as an alloying element in steel containing up to 0.35% lead by weight, aluminium containing up to 0.4% lead by weight and as a copper alloy containing up to 4% lead by weight.

# Table of Contents

Follow the instructions below to install and operate the unit. . . .	1
Step 1: Check the components. . . . .	1
System Requirements: . . . . .	1
Controls on the front . . . . .	2
Controls on the back . . . . .	2
Step 2: Install the adjustable foot stand. . . . .	3
Step 3: Connect the AC power. . . . .	4
Step 4: (Optional) Insert a memory card. . . . .	5
Step 5: Turn on the unit. . . . .	6
Step 6: Operate the unit. . . . .	6
Using the Photo mode. . . . .	8
Using the Calendar mode . . . . .	8
Using the Music mode. . . . .	9
Using the Video mode . . . . .	10

<Memo>

# Follow the instructions below to install and operate the unit.

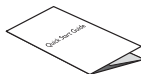
## Step 1: Check the components.

Carefully open the packing box and ensure that you have the following items.

1. Digital photo frame (DPG801BK)
2. Adjustable foot stand
3. USB cable
4. Quick Start Guide
5. AC power adapter



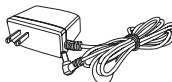
1



4



2



5



3

## System Requirements:

- USB 2.0 interface
- Windows 2000/XP/Vista

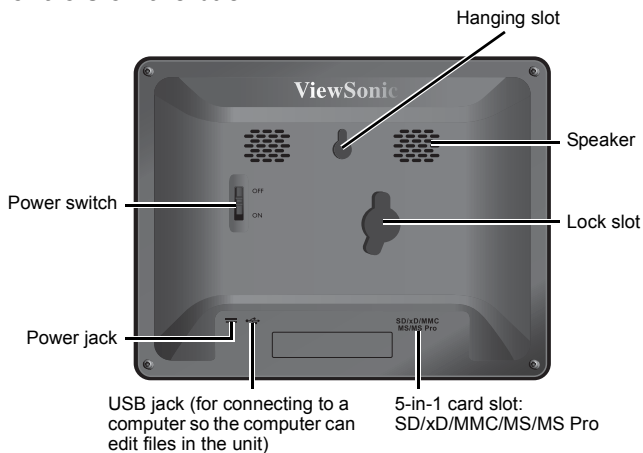


## Controls on the front



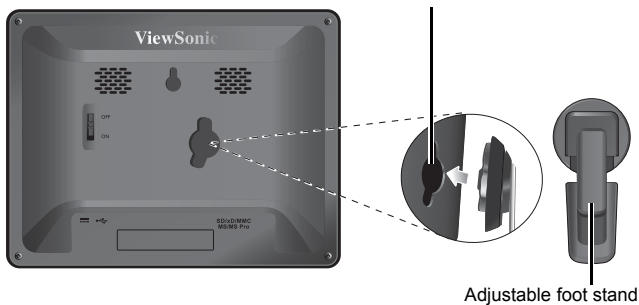
Control panel

## Controls on the back

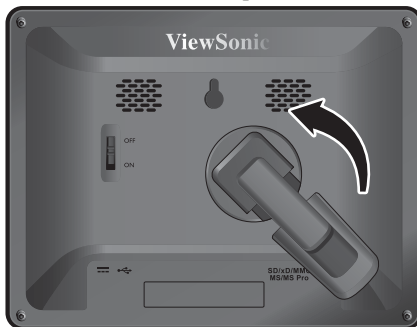


## Step 2: Install the adjustable foot stand.

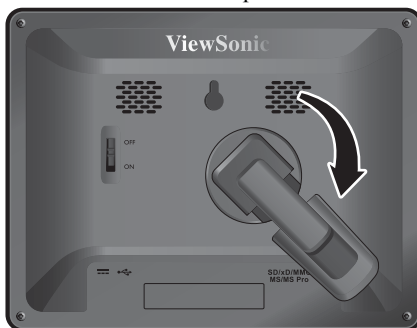
1. On the back of the unit, attach the foot stand to the lock slot.



2. To place the photo frame vertically, rotate the foot stand counter-clockwise until it is secured to the photo frame.

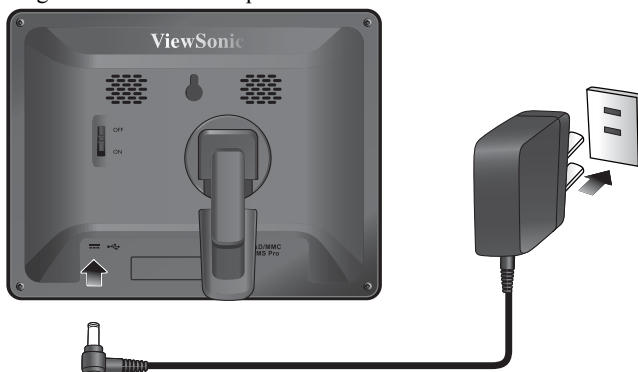


3. To place the photo frame horizontally, rotate the foot stand clockwise until it is secured to the photo frame.



### Step 3: Connect the AC power.

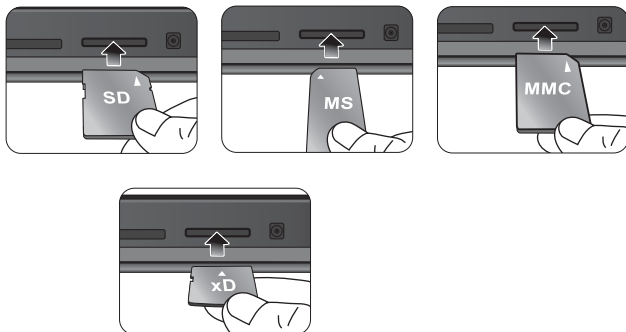
1. Plug one end of the AC power adapter into the power jack on the back of this unit.
2. Plug the other end into a power outlet.



3. Place this unit horizontally (recommended direction) or vertically on a stable surface.



#### Step 4: (Optional) Insert a memory card.



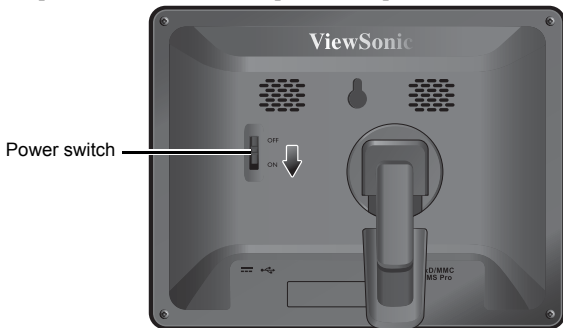
On the back of the unit, you can insert a memory card containing the content you want to show on the unit.



**Note:** Secure Digital™ Card (SD), xD-Picture Card™ (xD), MultiMedia Card™ (MMC), Memory Stick™ (MS), and Memory Stick Pro™ (MS Pro) memory card types are compatible with the unit. To use a Memory Stick Duo (MS Duo) memory card, a Memory Stick Duo (MS Duo) adapter is required.

## Step 5: Turn on the unit.

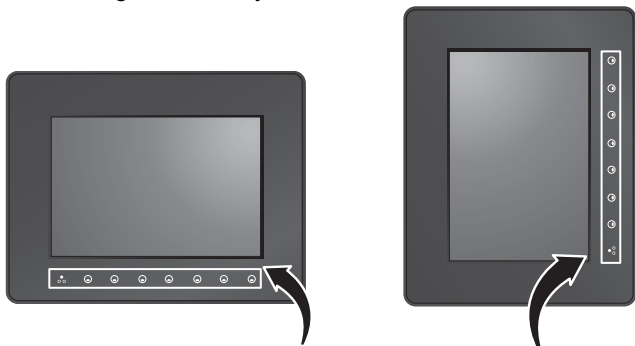
Slide the power switch to the **ON** position to power on the unit.




## Step 6: Operate the unit.

After the unit is turned on, available functions (represented by name or icon) show on the screen. Their corresponding buttons also light up on the control panel for a period of time.

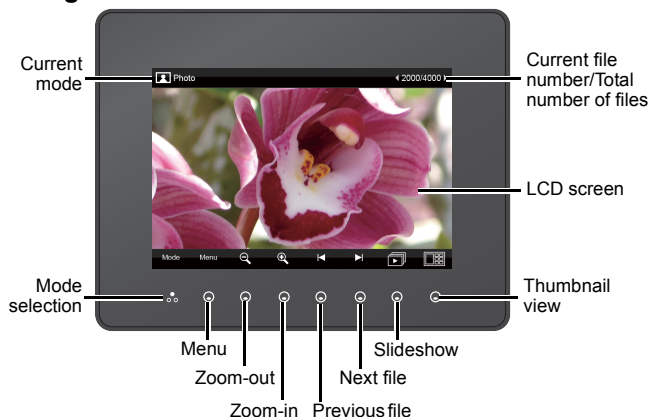
Simply press the corresponding button below (if the unit is placed horizontally) or beside (if the unit is placed vertically) the name or icon indicating the function you want to use.



Control panel

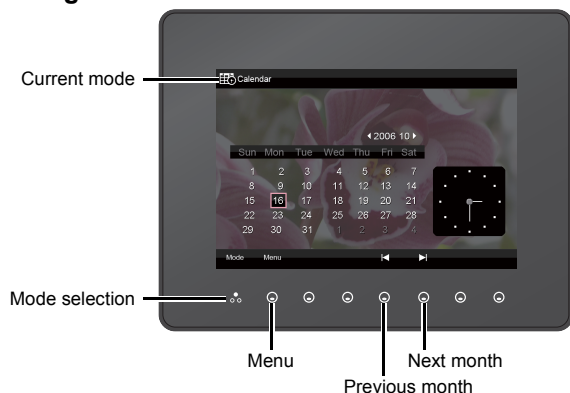
- To toggle among Photo, Calendar, Music, and Video modes, press  under **Mode**.
- If the control panel is unused for a certain period of time, the LED turns off automatically. To turn on the backlight again, press anywhere on the control panel.

## Using the Photo mode



**Note:** Standard JPEG and BMP image file formats are supported.

## Using the Calendar mode



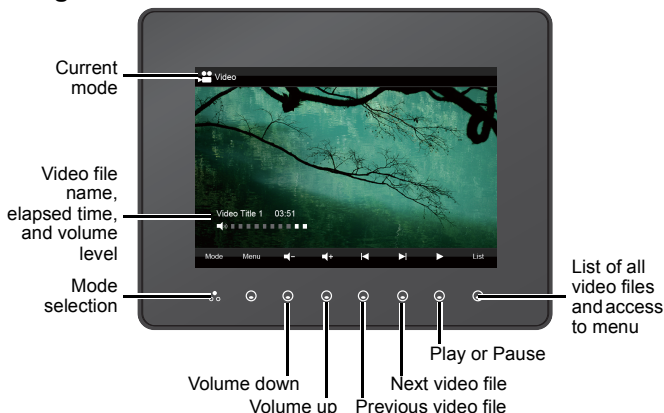
## Using the Music mode



**Note:** MP3 and WMA audio file formats are supported.



## Using the Video mode



**Note:** The Motion JPEG (M-JPEG) compressed video files (\*.avi and \*.mov) are supported. However, not all files with these extensions can be played properly. Refer to the table below for limitations.

	AVI	MOV	MPEG	MPG	WMV
<b>Motion-JPEG-&lt;DSC&gt;</b>	O	O	X	X	X
<b>MPEG1-&lt;VCD&gt;</b>	X	X	X	X	X
<b>MPEG2-&lt;DVD&gt;</b>	X	X	X	X	X
<b>MPEG4-&lt;DV&gt; (High Compress)</b>	X	X	X	X	X
<b>H.264-&lt;DV&gt;</b>	X	X	X	X	X
<b>H.263-&lt;MOBILE&gt;</b>	X	X	X	X	X
<b>WMV-&lt;PC&gt;</b>	X	X	X	X	X

